



# Solenoid valve 2/2 way N.O. With pilot control Explosion proof - Atex Ex d

21WA3ZIB130

÷

21WA4ZIB130

## PRESENTATION:

S.V. with pilot control for interception of fluids compatible with the construction materials. Aluminium coil housing, explosion proof "Ex d" . Electrical and electromechanical components according to Atex Directive 94/9/CE

A minimum operational pressure of 0,2 bar is required.  
The materials used and the tests carried out ensure maximum reliability and duration.

**USE:** Potentially explosive atmospheres  
Zone 1, 2, 21, 22

**PIPES:** G 3/8 - G 1/2

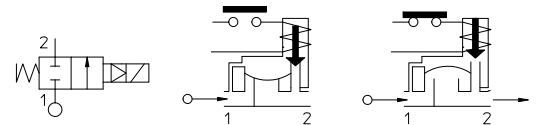
**COIL:** 8W - Ø 13  
BDA 155°C (class F)

PresMax. allowable pressure (PS) 20 bar  
Housing ambient temperature - 40°C + 60°C



Gaskets	Temperature		Medium
	-	+	
<b>B</b> =NBR (nitrile rubber)	- 10°C	+ 80°C	Air, inert gas, water
<b>E</b> =EPDM (ethylene-propylene)	- 10°C	+ 80°C	Water, low pressure steam
<b>V</b> =FKM (fluoroelastomer)	- 10°C	+ 80°C	Mineral oils (2°E), gasoline gas oil
<b>F</b> =H-NBR (hydrogenated nitrile)	- 30°C	+ 80°C	Air, inert gas, water R 134a, R 404a

For seals other than NBR replace the letter "B" with the ones corresponding to the other seals. E.I. 21WA3ZIV130.



Pipe ISO 228/1	Code	Max viscosity		Ø mm	Kv l/mn	Power watt	Pressure		
		cSt					min	M.O.P.D.	
							bar	AC bar	DC bar
G 3/8	21WA3ZIB130	12	~ 2	13	60	8	0,2	16	16
G 1/2	21WA4ZIB130								

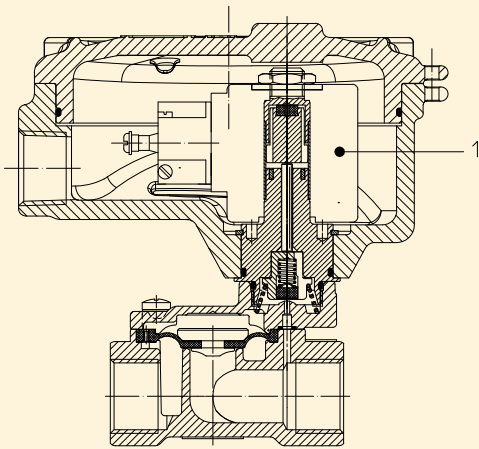


(According to Directive 94/9/CE ATEX )  
II 2G Ex d IIC T6 o T5 Gb  
II 2D Ex tb IIIC T80°C o T95°C Db IP67

## Note

Available on request and with minimum quantities.

The "ODE" reserves the right to carry out technical and aesthetic modifications without prior notification.



**MATERIALS:**

**Body** Brass - UNI EN 12165 CW617N  
**Armature tube** Stainless steel AISI series 300  
**Fixed core** Stainless steel AISI series 400  
**Plunger** Stainless steel AISI series 400  
**Phase displacement ring** Copper - Cu 99,9%  
**Spring** Stainless steel AISI series 300  
**Seal** Standard: B=NBR  
 On request :V=FKM; E=EPDM ;F=H-NBR  
**Orifice** Brass - UNI EN 12165 CW617N  
**Housing** Aluminium die cast

**Connector conformity** ISO 4400

**FEATURES:**

**Electrical conformity** IEC 335  
**Protection degree** IP 65 EN 60529 (DIN 40050)  
 with housing fitted by cable gland  
 Atex Ex d.

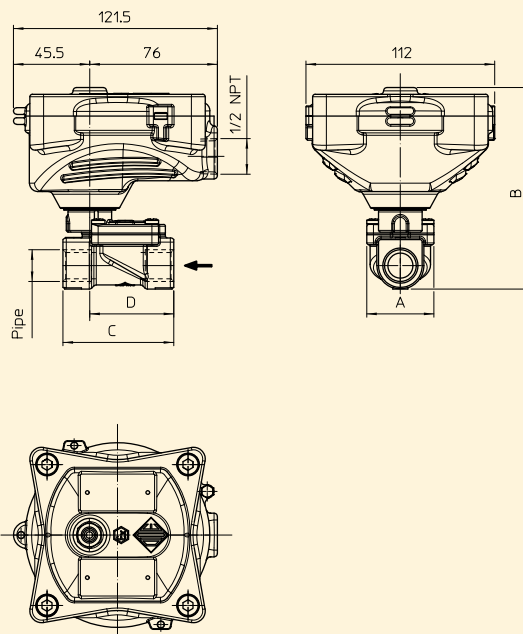
**SPARE PARTS:**

- 1. Coil:**  
 BDA08012CS  
 BDA08024CS  
 BDA08024DS  
 BDA08048AS  
 BDA08048CS  
 BDA08110CS  
 BDA08110DS  
 BDA08223DS

**ACCESSORIES:**

Code P992219 Cable Gland  
 (to be ordered separately)

**DIMENSIONS:**



Type	Pipe ISO 228/1	A mm	B mm	C mm	D mm
21WA3ZIB130	G 3/8	40	120	60	47
21WA4ZIB130	G 1/2			66	50

COIL TYPE	POWER ABSORPTION		
	W ==	Hold VA ~	Inrush VA ~
B	8	14,5	25