



Proportional Valve 2/2 way - angle seat/process valve Normally Closed - Flow direction below the seat - pneumatically operated

21IA4T15GP1-5
÷
21IA6T25GP1-5

PRESENTATION:

- High flow rate due to the angle seat configuration.
- Anti-water hammer feature with the fluid entry below the seat.
- Electrical operation is easy with the addition of a solenoid pilot.
- Stainless steel body and corrosion resistant actuator.
- The pneumatic actuator can be rotated through 360 degrees.
- Internal seals are self adjusting for long life and better sealing.
- Optical position indicator.
- Internal seals are self adjusting for long life.
- Universal mounting - any mounting orientation is acceptable.

USE: Automation, Heating, Water, Hot water, Steam (180°C), Aggressive fluids

PIPES: G 1/2 - G 1

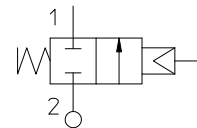
VALVE FEATURES:

Fluid Temperature - 10°C + 180°C
 Ambient temperature - 10°C + 60°C
 Viscosity of the fluid max 600 cSt
 Material Stainless steel AISI series 316
 Seal PTFE
 Packing gland PTFE, FKM



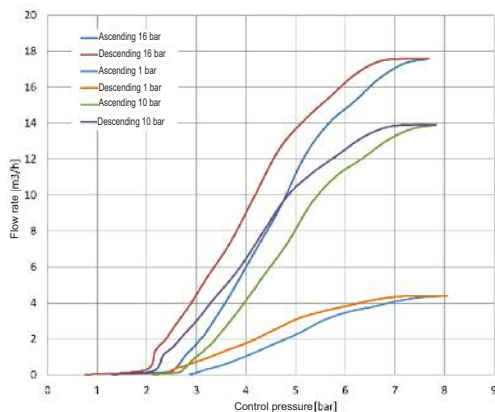
PILOT ACTUATOR FEATURES:

Fluid Dry Air or lubricated, gas and neutral fluids
 Fluid Temperature max + 60°C
 Body AISI 316
 Gaskets NBR
 Actuator Ø 50

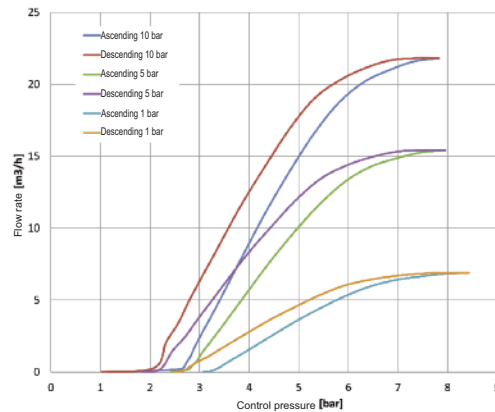


Pipe ISO 228/1	Code	Ø mm	Kv l/mn	Actuator pilot pressure (bar)		Differential pressure (bar)		Max. allowable pressure PS (bar)	Weight Kg
				min	max	min	max		
G 1/2	21IA4T15GP1-5	70	80	0	8	0	16	40	1,6
G 3/4	21IA5T20GP1-5	110	150				10		1,7
G 1	21IA6T25GP1-5	130	190				10		2,1

Flow rate in water



DN 15



DN 20

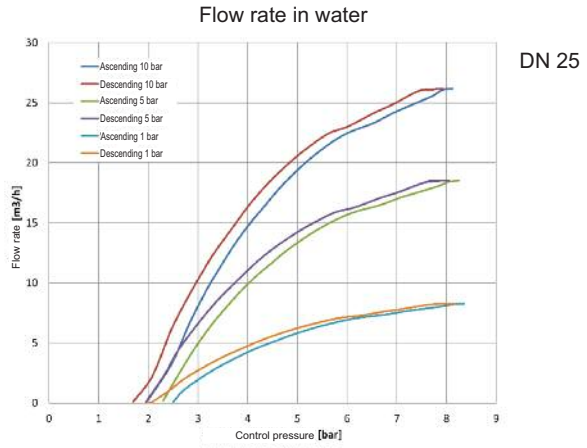
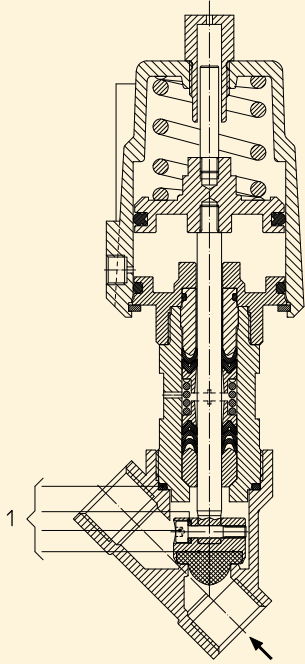
Note

For the control of the Proportional flow valve is suggested using a 3/2 way proportional pressure regulator with input signal 0-10 Volts (also 4-20 mA accordingly to the controller) and output signal 0-10 bar, connection G 1/8 (also G 1/4) and flow capability 100 NI/min.

The "ODE" reserves the right to carry out technical and aesthetic modifications without prior notification.

MAINTENANCE KIT:

- 1.
- G 1/2 R500078
- G 3/4 R500081
- G 1 R500084



DIMENSIONS:

Pipe ISO 228/1	A mm	B mm	C mm	D mm	H mm	L mm	T mm
G 1/2	190,6	SW 27	156	15,4	139,7	65	17
G 3/4	190,8	SW 32	162	21,4	139,8	75	19
G 1	200,3	SW 41	168	25	146,6	90	20,5

