



Proportional Valve 2/2 way - angle seat/process valve Normally Closed - Flow direction below the seat - pneumatically operated

21IA4T15GP2
÷
21IA6T25GP2

PRESENTATION:

- High flow rate due to the angle seat configuration.
- Anti-water hammer feature with the fluid entry below the seat.
- Electrical operation is easy with the addition of a solenoid pilot.
- Stainless steel body and corrosion resistant actuator.
- The pneumatic actuator can be rotated through 360 degrees.
- Optical position indicator.
- Internal seals are self adjusting for long life.
- Easily convertible from N.C. to N.O. or double acting.
- Universal mounting - any mounting orientation is acceptable.

USE: Automation, Heating, Water, Hot water, Steam (180°C), Aggressive fluids

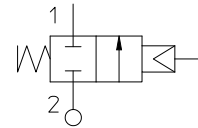
PIPES: G 1/2 - G 1

VALVE FEATURES:

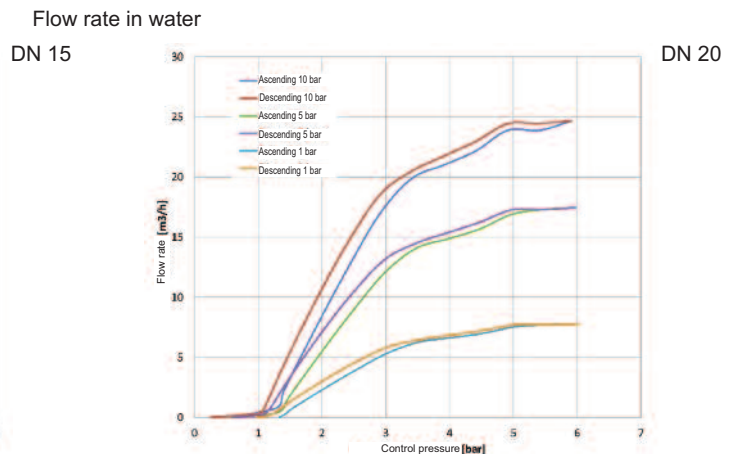
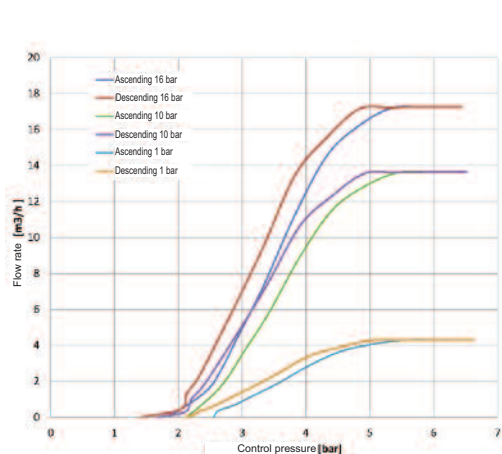
Fluid Temperature - 10°C + 180°C
 Ambient temperature - 10°C + 60°C
 Viscosity of the fluid max 600 cSt
 Material Stainless steel AISI series 316
 Seal PTFE
 Packing gland PTFE, FKM

PILOT ACTUATOR FEATURES:

Fluid Dry Air or lubricated, gas and neutral fluids
 Fluid Temperature max + 60°C
 Body Polyamide 66 with 30% glass fibre
 Gaskets NBR
 Actuator Ø 70



Pipe ISO 228/1	Code	Ø mm	Kv	Actuator pilot pressure (bar)		Differential pressure (bar)		Max. allowable pressure PS (bar)	Weight Kg
			l/mn	min	max	min	max		
G 1/2	21IA4T15GP2	15	70	0	10	0	16	40	1,4
G 3/4	21IA5T20GP2	20	130				10		1,5
G 1	21IA6T25GP2	25	150				10		1,8



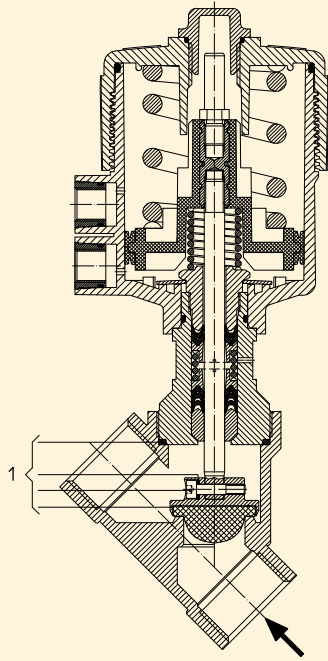
Note

For the control of the Proportional flow valve is suggested using a 3/2 way proportional pressure regulator with input signal 0-10 Volts (also 4-20 mA accordingly to the controller) and output signal 0-10 bar, connection G 1/8 (also G 1/4) and flow capability 100 NI/min.

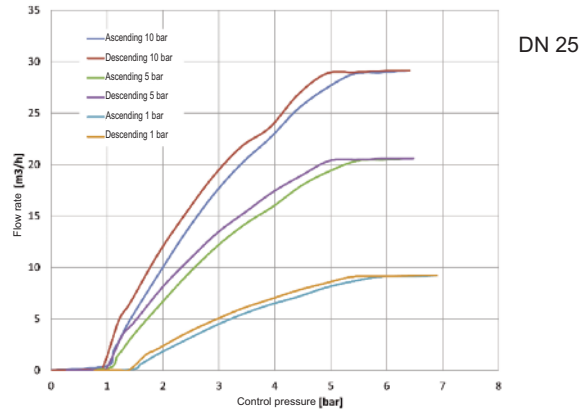
The "ODE" reserves the right to carry out technical and aesthetic modifications without prior notification.

MAINTENANCE KIT:

- 1. G 1/2 R500078
- G 3/4 R500081
- G 1 R500084



Flow rate in water



DIMENSIONS:

Pipe ISO 228/1	A mm	B mm	C mm	D mm	H mm	L mm	T mm
G 1/2	206,8	SW 27	178,7	15,4	163,3	65	17
G 3/4	211,7	SW 32	188,6	21,9	166,7	75,5	19
G 1	220,1	SW 41	197,8	25,1	172,7	90	21

