



Solenoid valve 3/2 way N.C. Direct acting Explosion proof Ex mb II T 4

31A3PDV15
÷
31A2PDV30

PRESENTATION:

Direct acting S.V. for interception of fluids compatible with the construction materials.

Minimum operational pressure is not required.

The materials used and the tests carried out ensure maximum reliability and duration.

USE: Potentially explosive atmospheres

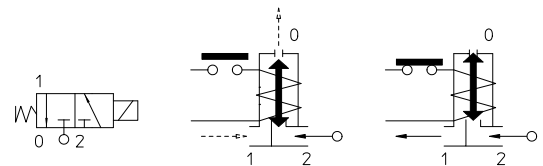
PIPES: G 1/8 - G 1/4

COIL: Series TNA - Ø 14,5
(For characteristic see catalogue page)

Max. allowable pressure (PS) 40 bar
Temperature max. medium + 80°C
Ambient temperature:
See coils catalogue page for its compatibility.



| Gaskets | Temperature | | Medium |
|--------------------------------|-------------|--------|---|
| V=FKM (fluoroelastomer) | - 10°C | + 80°C | Mineral oils (2°E), gasoline gas oil, fuel oils (7°E) |
| F=H-NBR (hydrogenated nitrile) | - 20°C | + 80°C | Air, inert gas, water R 134a, R 404a |



For seals other than FKM replace the letter "V" with the ones corresponding to the other seals. E.I. 31A2PDF15.

| Pipe ISO 228/1 | Code | Max viscosity | | Ø mm | Kv l/mn | Power watt | Pressure | | |
|----------------|-----------|---------------|-----|------|---------|--------------------------------|----------|------------------------|----|
| | | cSt | °E | | | | min bar | M.O.P.D. AC bar DC bar | |
| G 1/8 | 31A3PDV15 | 12 | ~ 2 | 1,5* | 1,2 | (See TNA coils catalogue page) | 0 | 15 | 15 |
| | 31A3PDV20 | 37 | ~ 5 | 2* | 2 | | | 10 | 10 |
| | 31A3PDV25 | 53 | ~ 7 | 2,5* | 3 | | | 6 | 6 |
| | 31A3PDV30 | | | 3* | 3,5 | | | 5 | 5 |
| G 1/4 | 31A2PDV15 | 12 | ~ 2 | 1,5* | 1,2 | | | 15 | 15 |
| | 31A2PDV20 | 37 | ~ 5 | 2* | 2 | | | 10 | 10 |
| | 31A2PDV25 | 53 | ~ 7 | 2,5* | 3 | | | 6 | 6 |
| | 31A2PDV30 | | | 3* | 3,5 | | | 5 | 5 |



(ATEX/ITA/09/063
According to Directive 94/9/CE ATEX)

Note

* 3rd way exhaust= Ø 3 mm

Available on request and with minimum quantities.

The "ODE" reserves the right to carry out technical and aesthetic modifications without prior notification.

MATERIALS:

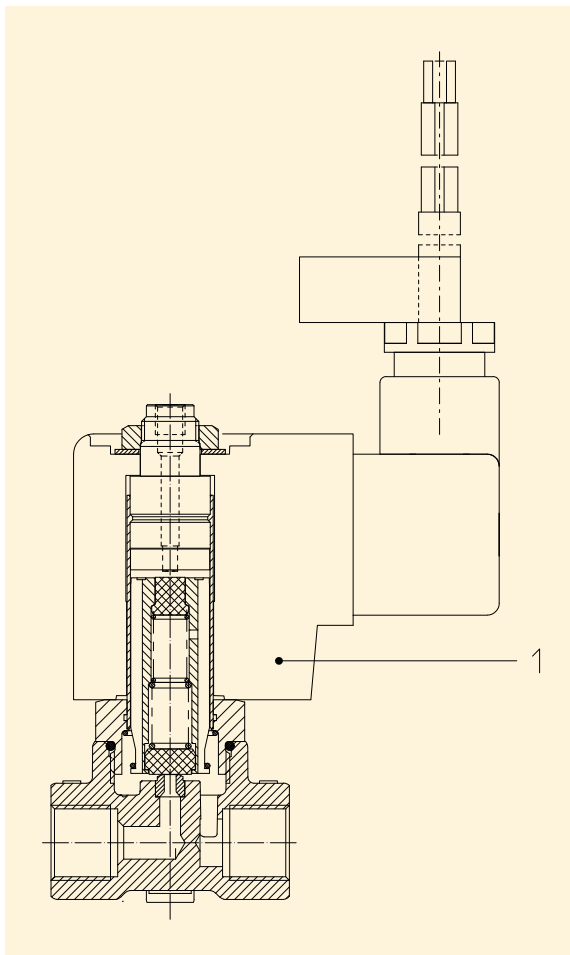
| | |
|--------------------------------|--|
| Body | Brass - UNI EN 12165 CW617N |
| Armature tube | Stainless steel AISI series 300 |
| Fixed core | Stainless steel AISI series 400 |
| Plunger | Stainless steel AISI series 400 |
| Phase displacement ring | Copper - Cu 99,9% |
| Spring | Stainless steel AISI series 300 |
| Seal | Standard: V=FKM On request: F=H-NBR |
| Orifice | Stainless steel AISI series 300 |

FEATURES:

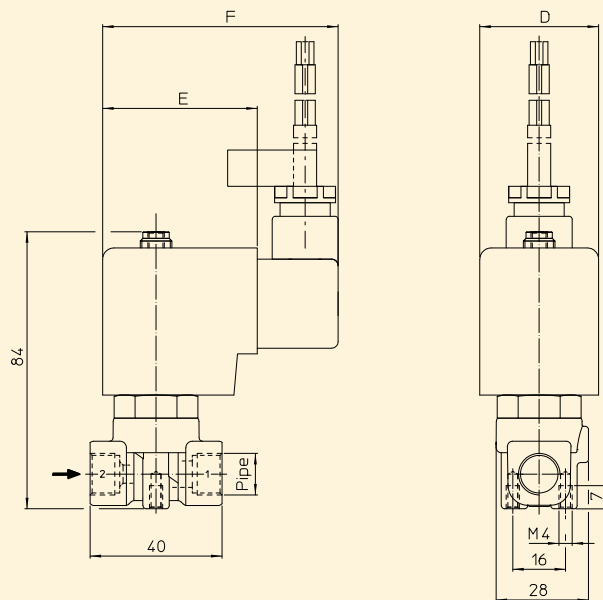
| | |
|--------------------------|----------------------------|
| Protection degree | IP 65 EN 60529 (DIN 40050) |
|--------------------------|----------------------------|

SPARE PARTS:

- Coil:**
See TNA coils list



DIMENSIONS:



| Type | Pipe ISO 228/1 |
|---------|-------------------|
| 31A3PDV | G 1/8 |
| 31A2QDV | G 1/4 |

| COIL TYPE | DIMENSIONS | | |
|--------------|------------|---------|---------|
| | D mm | E mm | F mm |
| T | 36 | 47 | 81 |