



Solenoid valve 3/2 way N.C. Direct acting

31APBA0R10-VRP

÷

31APBA0R30-VRP

PRESENTATION:

Direct acting S.V. for interception of fluids compatible with the construction material.

Minimum operational pressure is not required.

The materials used and the tests carried out ensure maximum reliability and duration.

USE: Hot water,
Steam (180°C)

PIPES: subplate mounting

COIL: 8W - Ø 13
BDA - BSA 155°C (class F)
BDV 180°C (class H)

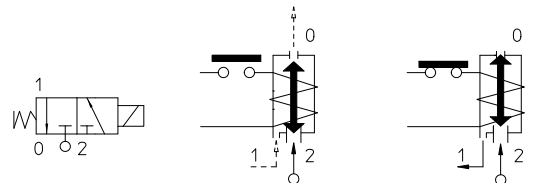
**COIL HOUSING AND COIL FORMER MATERIAL ARE
MADE BY 100% VIRGIN MATERIAL.**

Ambient temperature:

See coils catalogue page for its compatibility.



| Gaskets | Temperature | | Medium |
|---------|-------------|---------|------------------|
| R=RUBY | - 40°C | + 180°C | Hot water, Steam |



Max allowable pressure (PS) 16 bar - According to EN 60730-2-8 - Factor of safety for domestic applications equal to 5 times PS

| Pipe | Code | Max viscosity | | Ø mm | Kv l/mn | Power watt | Pressure | | |
|----------------------|----------------|---------------|----|---------|------------|---------------|------------|--------------------------|----|
| | | cSt | °E | | | | min bar | M.O.P.D AC bar DC bar | |
| SUBPLATE MOUNTING | 31APBA0R10-VRP | - | - | 1* | 0,45 | 8 | 0 | 16 | 16 |
| | 31APBA0R15-VRP | | | 1,5* | 1,4 | | | | |
| | 31APBA0R20-VRP | | | 2* | 2 | | | | |
| | 31APBA0R25-VRP | | | 2,5* | 3,2 | | | | |
| | 31APBA0R30-VRP | | | 3* | 4 | | | | |

Max allowable pressure (PS) 25 bar - Safety factor for industrial application equal to 3 times PS

| Pipe | Code | Max viscosity | | Ø mm | Kv l/mn | Power watt | Pressure | | |
|----------------------|----------------|---------------|----|---------|------------|---------------|------------|--------------------------|----|
| | | cSt | °E | | | | min bar | M.O.P.D AC bar DC bar | |
| SUBPLATE MOUNTING | 31APBA0R10-VRP | - | - | 1* | 0,45 | 8 | 0 | 25 | 25 |
| | 31APBA0R15-VRP | | | 1,5* | 1,4 | | | | |
| | 31APBA0R20-VRP | | | 2* | 2 | | | | |
| | 31APBA0R25-VRP | | | 2,5* | 3,2 | | | | |
| | 31APBA0R30-VRP | | | 3* | 4 | | | | |

Note

* 3rd way exhaust= Ø 2,5 mm

Available also with NSF approval.

Available also with coil Ex nA

The use of rigid sealings usually implies a slight leakage, limited within 2scc/min at the pressure of 1 bar.

Available on request and with minimum quantities.

The "ODE" reserves the right to carry out technical and aesthetic modifications without prior notification.

MATERIALS:

| | |
|--------------------------------|----------------------------|
| Body | PPS |
| Armature tube | Stainless steel series 300 |
| Fixed core | Stainless steel series 400 |
| Plunger | Stainless steel series 300 |
| Phase displacement ring | Copper - Cu 99,9% |
| Spring | Stainless steel series 300 |
| Seal | R=RUBY |
| Orifice: Inserted slot | Stainless steel series 300 |

On request:

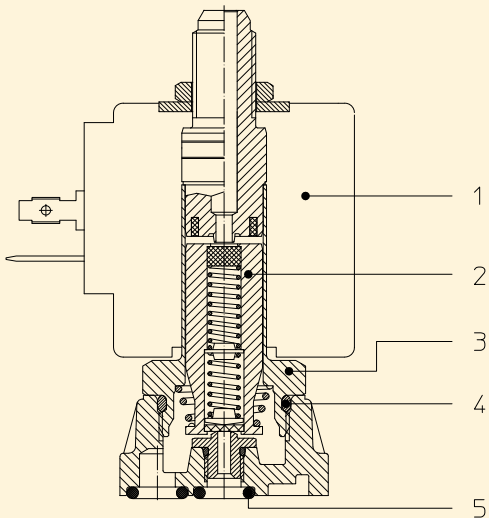
| | |
|-----------------------------|---------------|
| Connector | Pg 9 or Pg 11 |
| Connector conformity | ISO 4400 |

FEATURES:

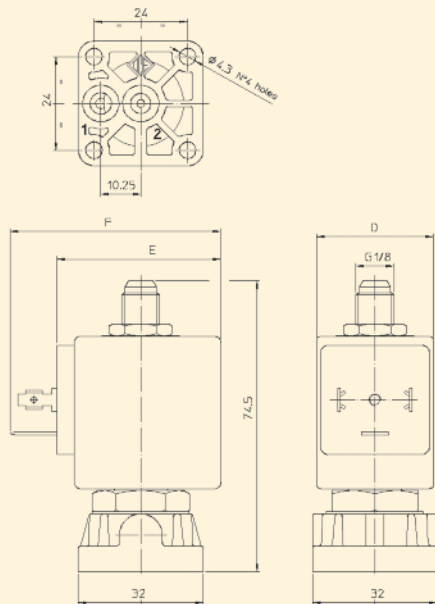
| | |
|------------------------------|--|
| Electrical conformity | IEC 335 |
| Protection degree | IP 65 EN 60529 (DIN 40050) with coil fitted by connector. |

SPARE PARTS:

- 1. Coil:**
See coils list
- 2. Complete plunger:**
Code R450982
- 3. Complete armature tube:**
Code R450864
- 4. Gasket O-Ring:**
Code R990000/VX
- 5. Gasket O-Ring:**
Code R990002/S



DIMENSIONS:



| COIL TYPE | POWER ABSORPTION | | | DIMENSIONS | | |
|-----------|------------------|--------------|----------------|------------|---------|---------|
| | W --- | Hold VA ~ | Inrush VA ~ | D mm | E mm | F mm |
| B | 8 | 14,5 | 25 | 30 | 42 | 54 |