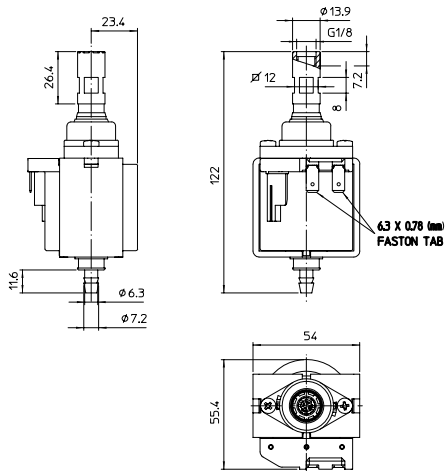


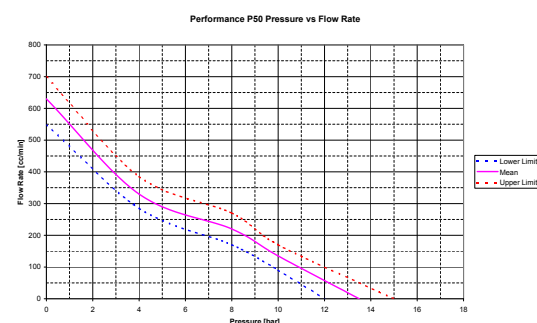


Drawing Reference



Note: Continuous dry-run would damage the unit permanently

Flow Curve



APPLICATION

- ▶ Coffee Machines
- ▶ Floor Cleaning Machines
- ▶ Steam Ironing Stations

SPECIFICATION

- | | |
|-----------------------------------|---|
| ▶ Outlet | G 1/8 |
| ▶ Pressure | 15 bar |
| ▶ Fluids | Tap Water/Distilled Water |
| ▶ Max Ambient Temperature | 35°C |
| ▶ Max Fluid Temperature | 35°C |
| ▶ Dead Head Pressure | See Performance Chart |
| ▶ Free Flow Rate | See Performance Chart |
| ▶ Power Consumption (max.) | 53W |
| ▶ Operating Voltage | 100Vac 50Hz/60Hz (JET)
120Vac 60Hz (UL)
230Vac/50Hz (VDE) |
| ▶ Working cycle | 1.0 min ON, 1 min OFF |
| ▶ Not require External Type Diode | |
| ▶ Coil Insulation | Class F (155°C)
Class H (180°C)
depending on voltage |
| ▶ Terminals | 6.3mm x 0.8mm Faston type |
| ▶ Endurance | 18.000 cycles (at 8-10 bar)
(base on 1 min ON, 1 min OFF) |
| ▶ Coil Encapsulation | 750°C GWI |

MATERIALS

- | | |
|-------------------|---------------------|
| ▶ Plunger | Stainless Steel |
| ▶ Spring | Stainless Steel |
| ▶ No return valve | Sintetic Rubber |
| ▶ Seal | NBR or equivalent |
| ▶ Plastic parts | PA66 Based Plastics |

CERTIFIED BY

- ▶ CE
- ▶ NSF
- ▶ UL 778
- ▶ VDE (IEC 60335-1, 60335-2-41)

Proven sealing system for reliable and long life application

Ordering part number:
P992124-AP (230V 50Hz)
P992182-AP (120V 60Hz)